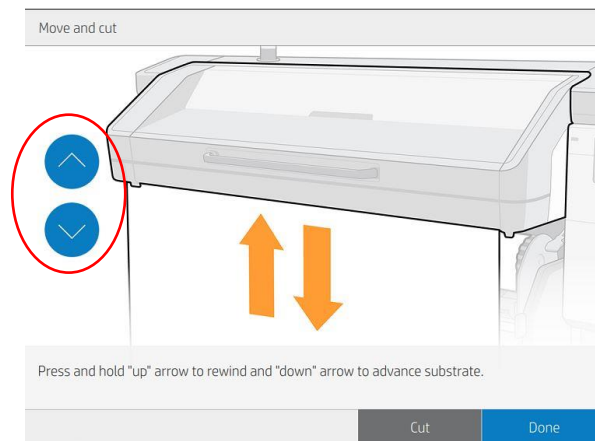


DUAL SIDED BANNER LOADING GUIDE

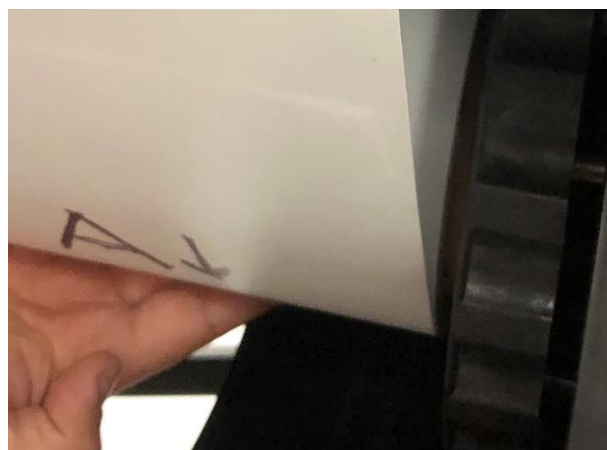
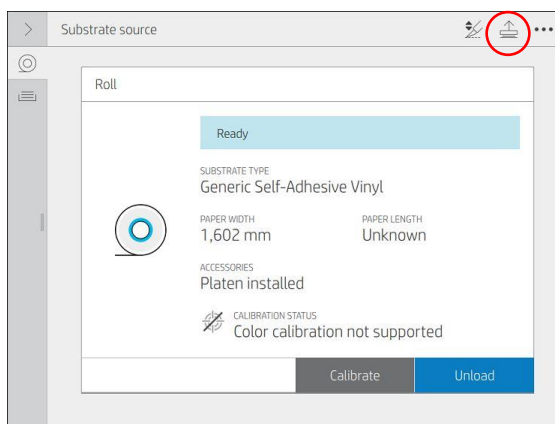
-Load a certified dual sided printable media on the printer as usual.



-Advance media via Front Panel until the leading edge reaches the Input Roll.



-Release the substrate via Front panel and de-skew it manually by matching the substrate with the roll's edge.



-Lower the pinches by clicking the “Done” button. Proceed to move the substrate again until it reaches the core already loaded on the Take-Up Reel.

-Pin the leading edge to the core with three tape strips.

Tighten the attachment trying to get rid of as many wrinkles as possible.

-Activate the Take-Up Reel while advancing media a few more inches.

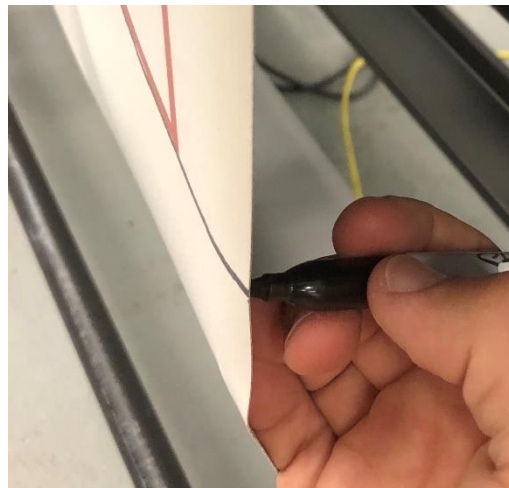
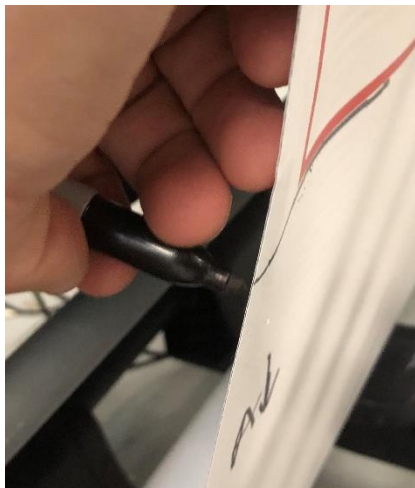
-Proceed to underline the pinches line with a permanent marker on both sides of the media as in the following pictures:



-You can start printing Side A now.

-Once the Side A job is done, move the media backwards via Front panel until the pinch line already drawn is accessible.

-Proceed to draw the same line on both sides of the media's back (Side B).



-Move media backwards until the three tape strips peel off the core.

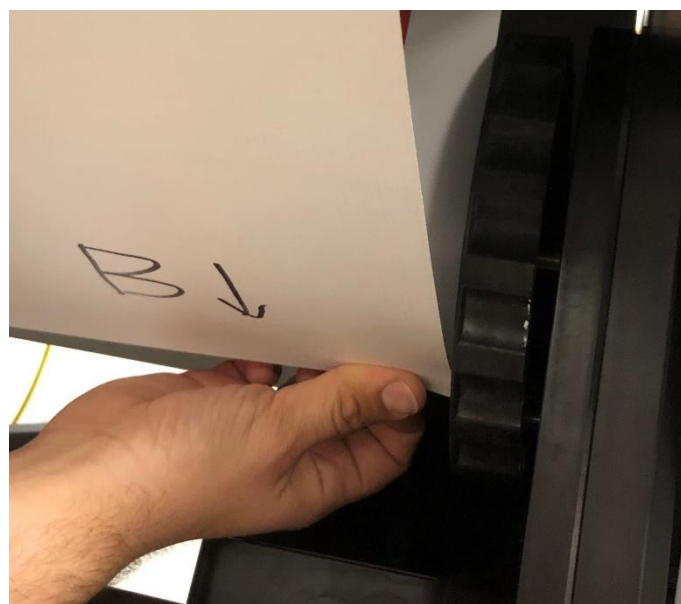


-Remove the strips and unload the media.

-Switch the roll's position horizontally and load it once again as Side A.

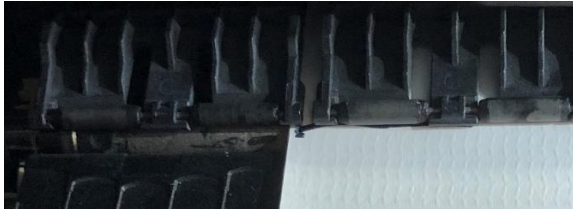


-De-skew it manually again.



-Lower pinches and move substrate to attach it to the core.

-Once the media is properly attached, move it via Front Panel and try to catch the pinch line already drawn once it's under the pinches as in the following pictures:



This process may take a few minutes.

Try to be as accurate as possible; practice makes perfect!

-You can start printing on Side B now.